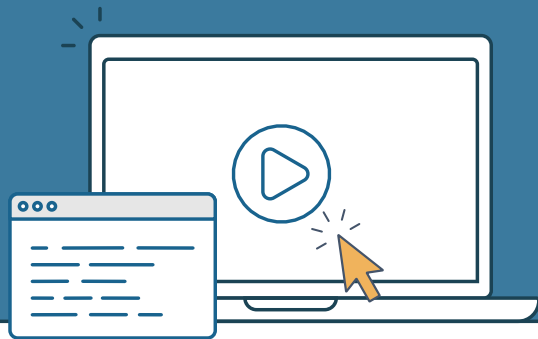




# SPARS CSAT Quick Reference

## Client Services & SOR/TOR Program Services



### Getting Started

- [New Grantee Quick Reference Guide](#)
- [CSAT Grantee Welcome and Checklist](#)
- [CSAT GPO Welcome and Checklist](#)
- [Add/Remove Users Form](#)
- [Introduction to SPARS – CSAT](#) 
- [Five Tips for Managing Your SPARS Account](#) 

### Top Tips and Reminders

- Check the [SPARS Homepage](#) for important announcements.
- CSV Batch Uploading is available to all grantees.
- Refer to the [Section H information sheet](#) to identify if your grant requires Section H of the GPRA Client Outcomes Tool.

### SPARS Help Desk

[SPARSHelpDesk@mathematica-mpr.com](mailto:SPARSHelpDesk@mathematica-mpr.com)  
1-800-685-7623

### Finding Key Resources



### Client Services


- [CSAT GPRA Client Outcomes Tool – English](#)
- [CSAT GPRA Client Outcomes Tool – Spanish](#)
- [CSAT GPRA Client Outcomes QxQ Guide – English](#)
- [CSAT GPRA Client Outcomes QxQ Guide – Spanish](#)
- [CSAT GPRA Frequently Asked Questions](#)
- [CSAT GPRA Section H Information Sheet](#)
- [CSAT GPRA Client Outcomes Codebook](#)
- [CSAT GPRA CSV Upload template](#)
- [Pronunciation of Selected Drugs](#)

### SOR/TOR Program Services

- [SOR/TOR Program Instrument Tool](#)
- [SOR/TOR Program Instrument – Spanish](#)
- [SOR/TOR Program Instrument QxQ](#)
- [SOR/TOR Program Instrument QxQ – Spanish](#)
- [SOR/TOR Program Instrument FAQ](#)
- [SOR/TOR Program Instrument Codebook](#)

### Trainings

- [CSAT GPRA Tool Training & Slides](#)
- [CSAT GPRA Data Entry Training](#)
- [CSV Batch Upload Training & Slides](#)
- [SOR TOR Instrument and Data Entry Trainings](#)
- [Section H Training](#)
- [CSAT Follow-up Training](#)

 This icon indicates resources that require the user to be logged into SPARS.